

Property Summary

6455 N Wickham Rd
For Lease



PROPERTY DESCRIPTION

Outparcel to Pineda Landings, featuring retail space with national and regional tenants such as:

Fresh Market, Zaxby's, Jersey Mike's, Orange Theory Fitness and many more.

Pylon and building signage

Easy Access

LOCATION DESCRIPTION

Located on highly traveled N Wickham Rd, main North/South throughfare in Melbourne

Close to Hwy US-1 and I-95

AADT - 27,800 ('23)

OFFERING SUMMARY

Lease Rate:	\$28.00 SF/yr (NNN \$8.52/sf)
Number of Units:	2
Available SF:	1,008 SF
Lot Size:	0.91 Acres
Building Size:	5,984 SF

DEMOGRAPHICS	1 MILE	3 MILES	5 MILES
Total Households	1,584	13,295	31,794
Total Population	3,970	33,250	77,199
Average HH Income	\$96,793	\$93,406	\$82,706

JEFFERY T. ROBISON, CCIM

President | Broker

321.722.0707 x13

Jeff@TeamLBR.com



Information contained herein has been obtained through sources deemed reliable but cannot be guaranteed as to its accuracy. A purchaser or lessee is expected to verify all information to his/her own satisfaction. Zoning information subject to change and not warranted. Always confirm current requirements with local governing agencies.

Additional Photos

6455 N Wickham Rd
For Lease

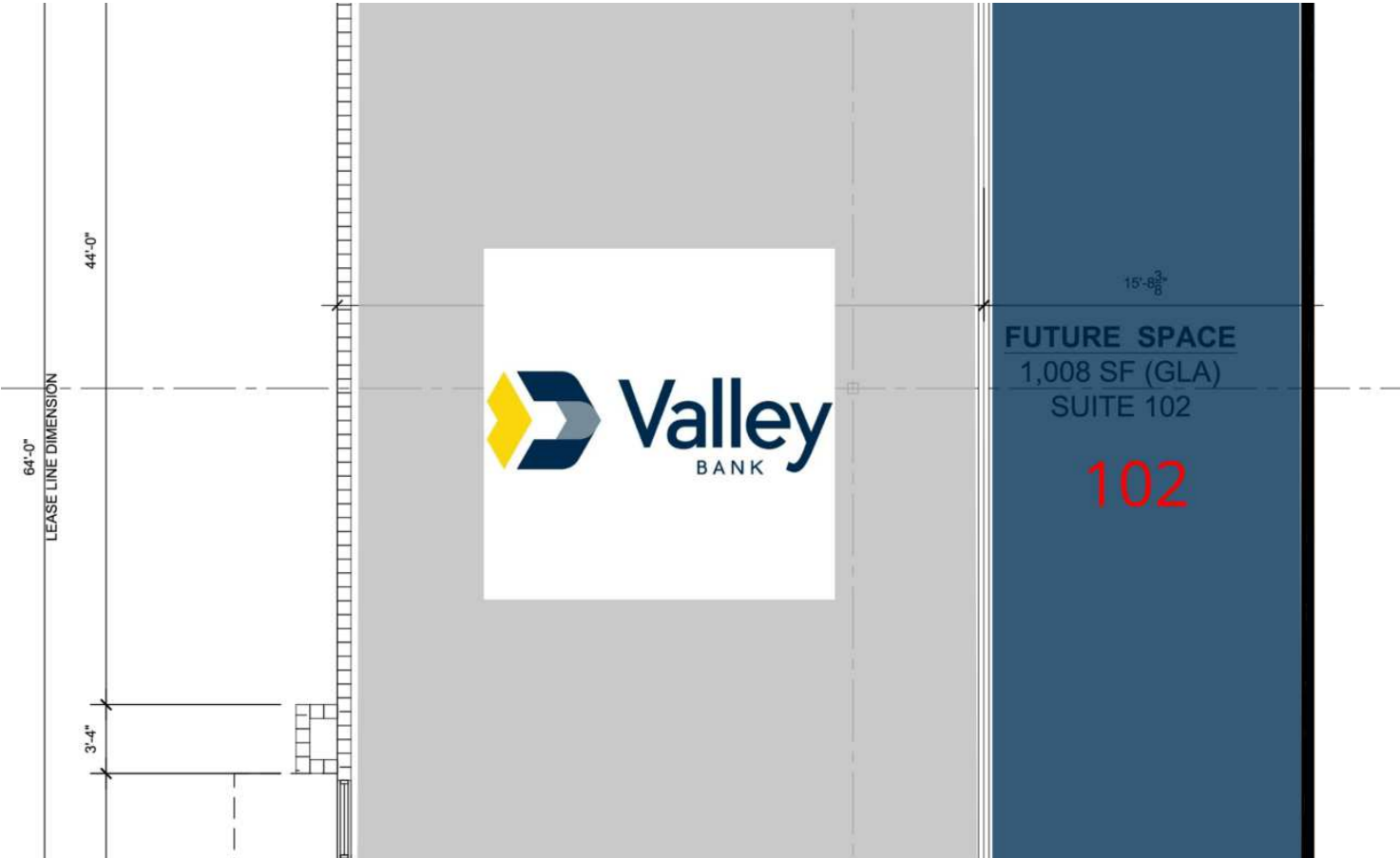


JEFFERY T. ROBISON, CCIM

President | Broker
321.722.0707 x13
Jeff@TeamLBR.com



Information contained herein has been obtained through sources deemed reliable but cannot be guaranteed as to its accuracy. A purchaser or lessee is expected to verify all information to his/her own satisfaction. Zoning information subject to change and not warranted. Always confirm current requirements with local governing agencies.



LEASE INFORMATION

Lease Type:	NNN \$8.52/sf	Lease Term:	Negotiable
Total Space:	1,008 SF	Lease Rate:	\$28.00 SF/yr

AVAILABLE SPACES

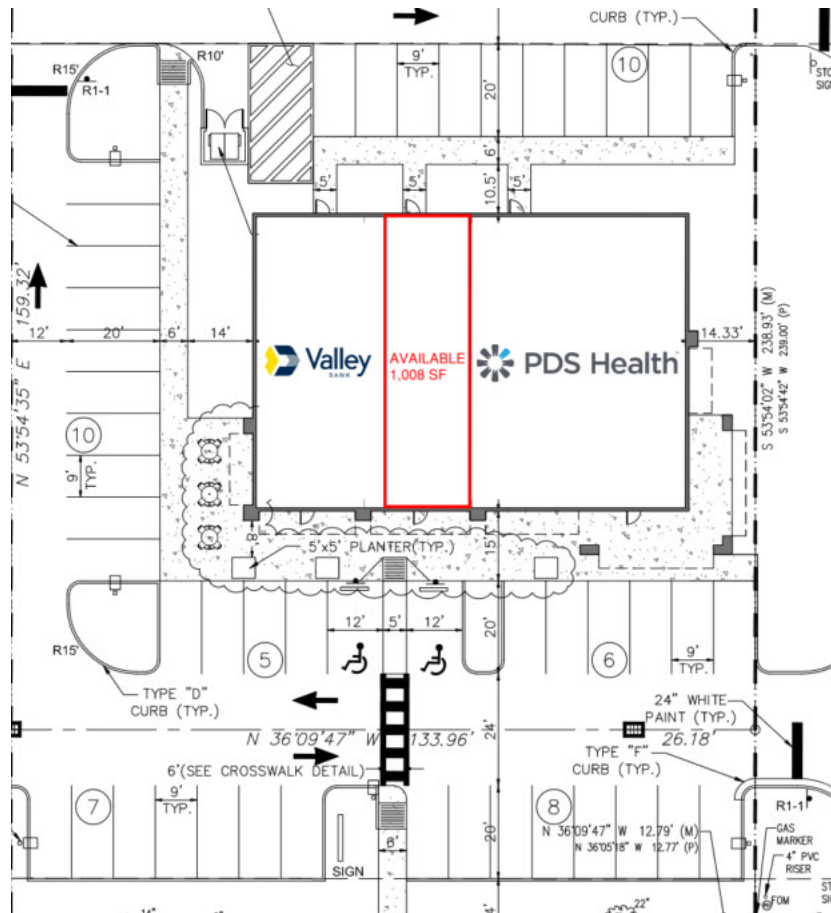
SUITE	TENANT	SIZE	TYPE	RATE
102	Available	1,008 SF	NNN \$8.52/sf	\$28.00 SF/yr

JEFFERY T. ROBISON, CCIM

President | Broker
321.722.0707 x13
Jeff@TeamLBR.com



Information contained herein has been obtained through sources deemed reliable but cannot be guaranteed as to its accuracy. A purchaser or lessee is expected to verify all information to his/her own satisfaction. Zoning information subject to change and not warranted. Always confirm current requirements with local governing agencies.



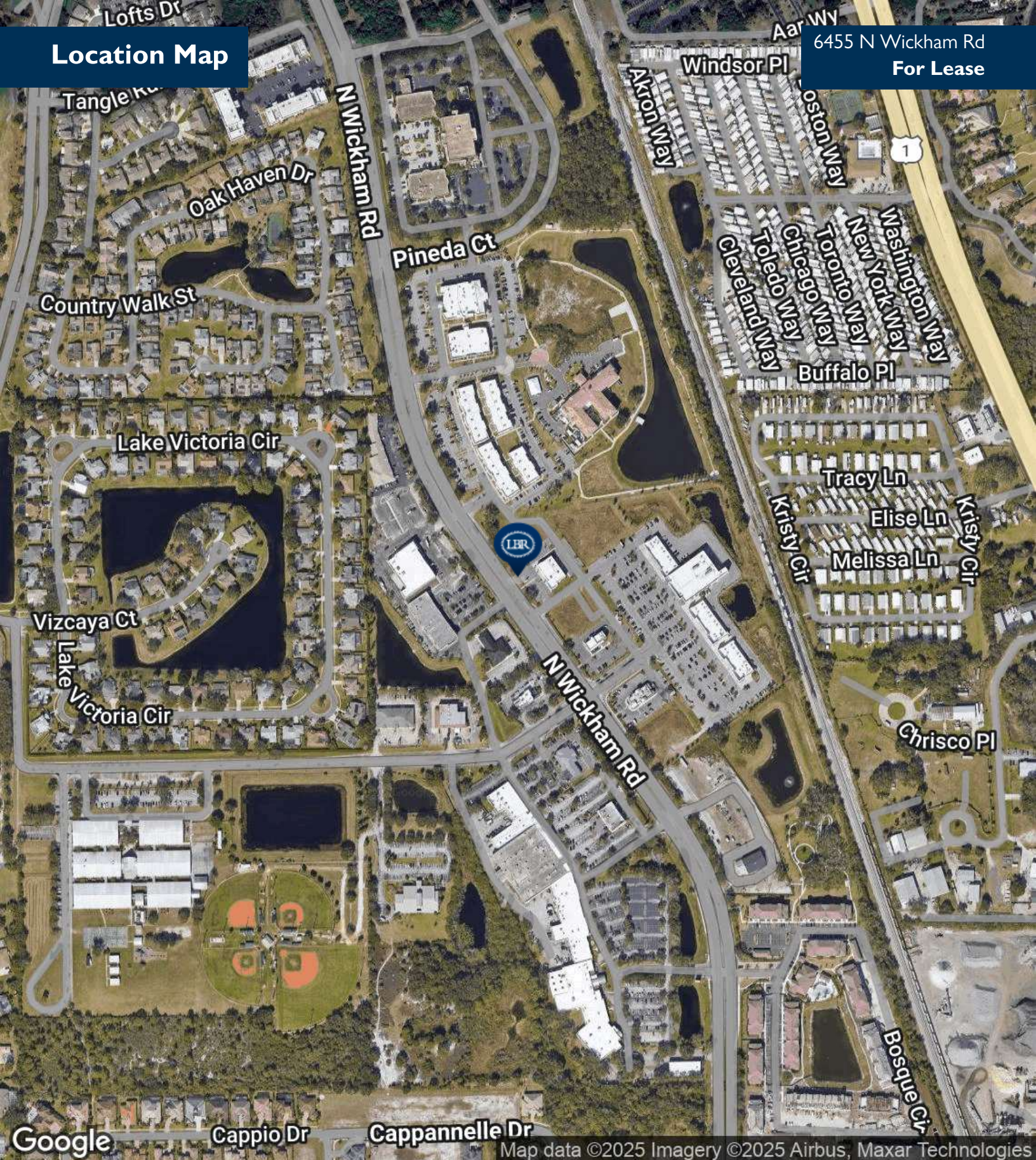
JEFFERY T. ROBISON, CCIM

President | Broker
321.722.0707 x13
Jeff@TeamLBR.com



Location Map

6455 N Wickham Rd
For Lease



JEFFERY T. ROBISON, CCIM

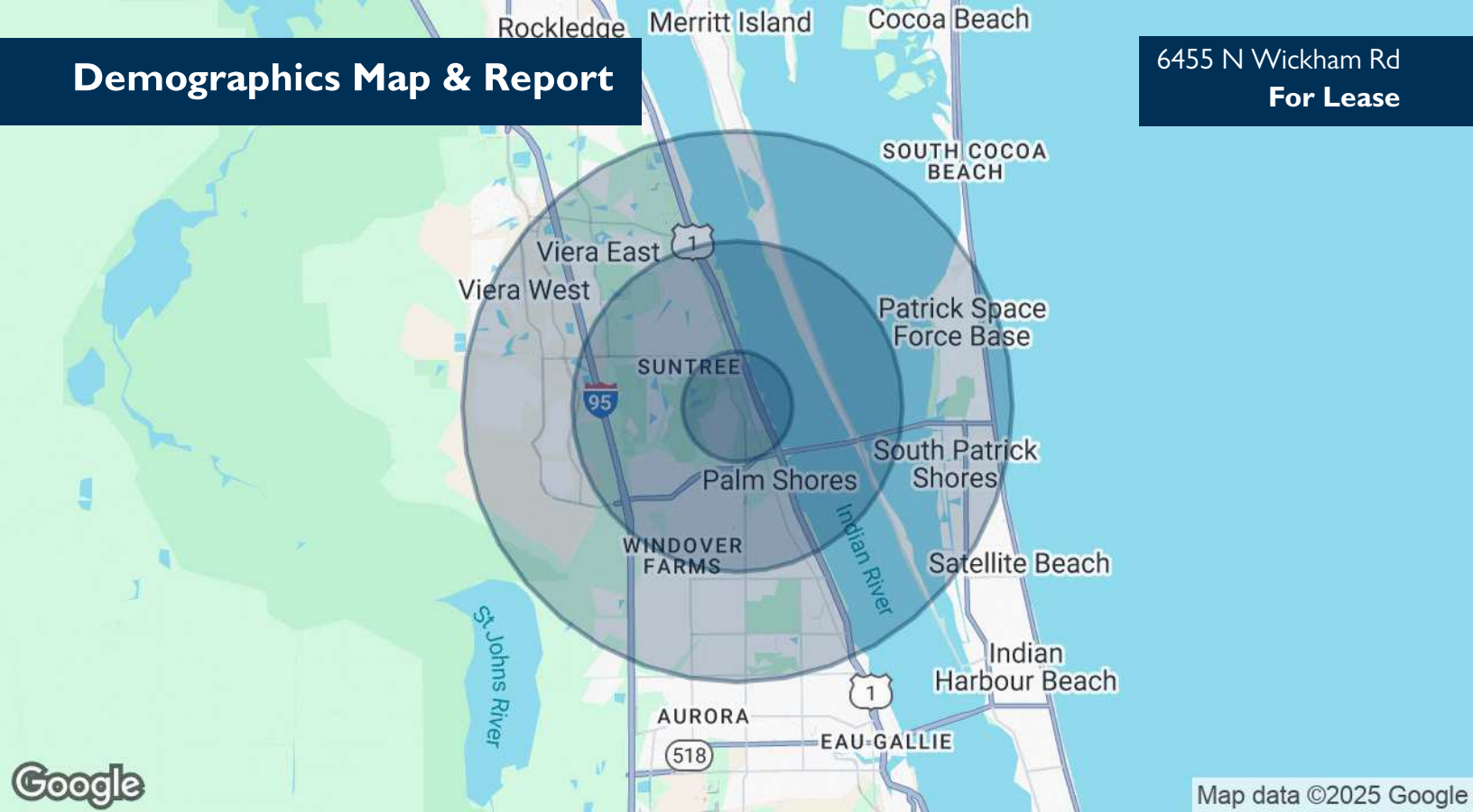
President | Broker
321.722.0707 x13
Jeff@TeamLBR.com



Information contained herein has been obtained through sources deemed reliable but cannot be guaranteed as to its accuracy. A purchaser or lessee is expected to verify all information to his/her own satisfaction. Zoning information subject to change and not warranted. Always confirm current requirements with local governing agencies.

Demographics Map & Report

6455 N Wickham Rd
For Lease



POPULATION	1 MILE	3 MILES	5 MILES
Total Population	3,970	33,250	77,199
Average Age	47.4	47.0	45.8
Average Age (Male)	47.8	47.0	45.0
Average Age (Female)	46.9	47.0	46.5

HOUSEHOLDS & INCOME	1 MILE	3 MILES	5 MILES
Total Households	1,584	13,295	31,794
# of Persons per HH	2.5	2.5	2.4
Average HH Income	\$96,793	\$93,406	\$82,706
Average House Value	\$300,720	\$296,348	\$275,431

2020 American Community Survey (ACS)

JEFFERY T. ROBISON, CCIM

President | Broker
321.722.0707 x13
Jeff@TeamLBR.com



Information contained herein has been obtained through sources deemed reliable but cannot be guaranteed as to its accuracy. A purchaser or lessee is expected to verify all information to his/her own satisfaction. Zoning information subject to change and not warranted. Always confirm current requirements with local governing agencies.



It turns out, you don't have Area Analytics enabled!

(be sure to toggle "**Display area analytics on this listing?**" to "**ON**" in the **Area Analytics Tab**)

JEFFERY T. ROBISON, CCIM

President | Broker
321.722.0707 x13
Jeff@TeamLBR.com

