



RETAIL SPACE FOR LEASE

16889 Chesterfield Airport Rd
Chesterfield, Missouri 63005

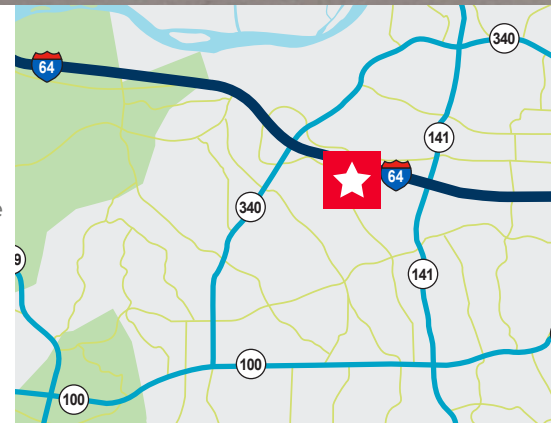


16889 Chesterfield Airport Rd

957 SF End Cap Available

Property Highlights

- High profile location in a regional retail node located across the street from one of the largest power centers in the United States.
- Site provides excellent visibility to the main retail corridor with front signage towards Chesterfield Airport Rd and rear signage with visibility to 90,000+ VPD on I-64/40.
- Strategic location in Chesterfield Valley provides easy access to St. Louis and St. Charles County customers with regional draws including Top Golf, Simon Outlet Mall, The District (includes The Factory, Main Event, etc), Chesterfield Commons Power Center, Tesla, Annie Gunns, and much much more!
- Strong proximity daytime population being along the dense I-64 suburban office corridor.



Demographics

	1 Mile	3 Miles	5 Miles
Daytime Population	5,004	30,508	75,510
Population	2,541	24,799	97,377
Average HH Income	\$161,341	\$157,277	\$149,030

David Wirth

+1 314 925 2916
david.wirth@cushwake.com

Kyle Pershing

+1 314 236 5471
kyle.pershing@cushwake.com

Traffic Count

Chesterfield Airport Rd 17,938 VPD | **Hwy 64** 90,069 VPD

Cushman & Wakefield Copyright 2017. No warranty or representation, express or implied, is made to the accuracy or completeness of the information contained herein, and same is submitted subject to errors, omissions, change of price, rental or other conditions, withdrawal without notice, and to any special listing conditions imposed by the property owner(s). As applicable, we make no representation as to the condition of the property (or properties) in question.

7700 Forsyth Blvd, Suite 1210
St. Louis, Missouri
main +1 314 862 7100
cushmanwakefield.com

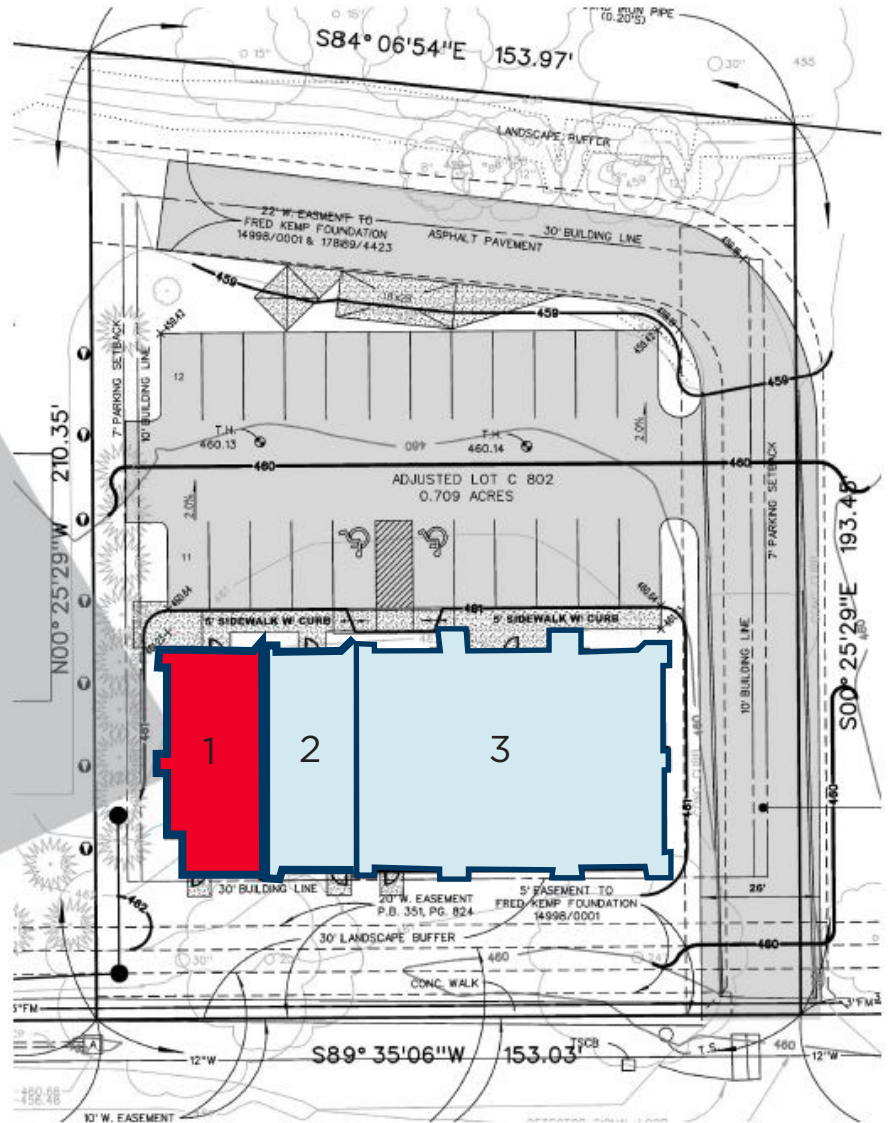
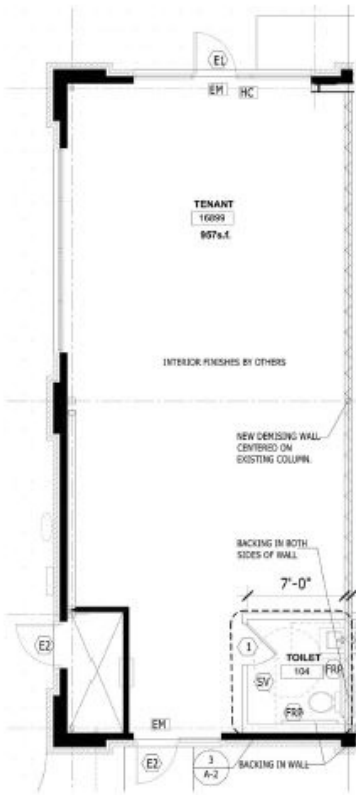


**CUSHMAN &
WAKEFIELD**

RETAIL SPACE FOR LEASE

16889 Chesterfield Airport Rd
Chesterfield, Missouri 63005

Site Plan



Space	Status	SF
1	Available	957
2	Digital Doc	1,000
3	Chesterfield Smiles Dentisary	3,200

David Wirth
+1 314 925 2916
david.wirth@cushwake.com

Kyle Pershing
+1 314 236 5471
kyle.pershing@cushwake.com

7700 Forsyth Blvd, Suite 1210
St. Louis, Missouri
main +1 314 862 7100
cushmanwakefield.com



RETAIL SPACE FOR LEASE

16889 Chesterfield Airport Rd
Chesterfield, Missouri 63005

Aerial



David Wirth
+1 314 925 2916
david.wirth@cushwake.com

Kyle Pershing
+1 314 236 5471
kyle.pershing@cushwake.com

7700 Forsyth Blvd, Suite 1210
St. Louis, Missouri
main +1 314 862 7100
cushmanwakefield.com

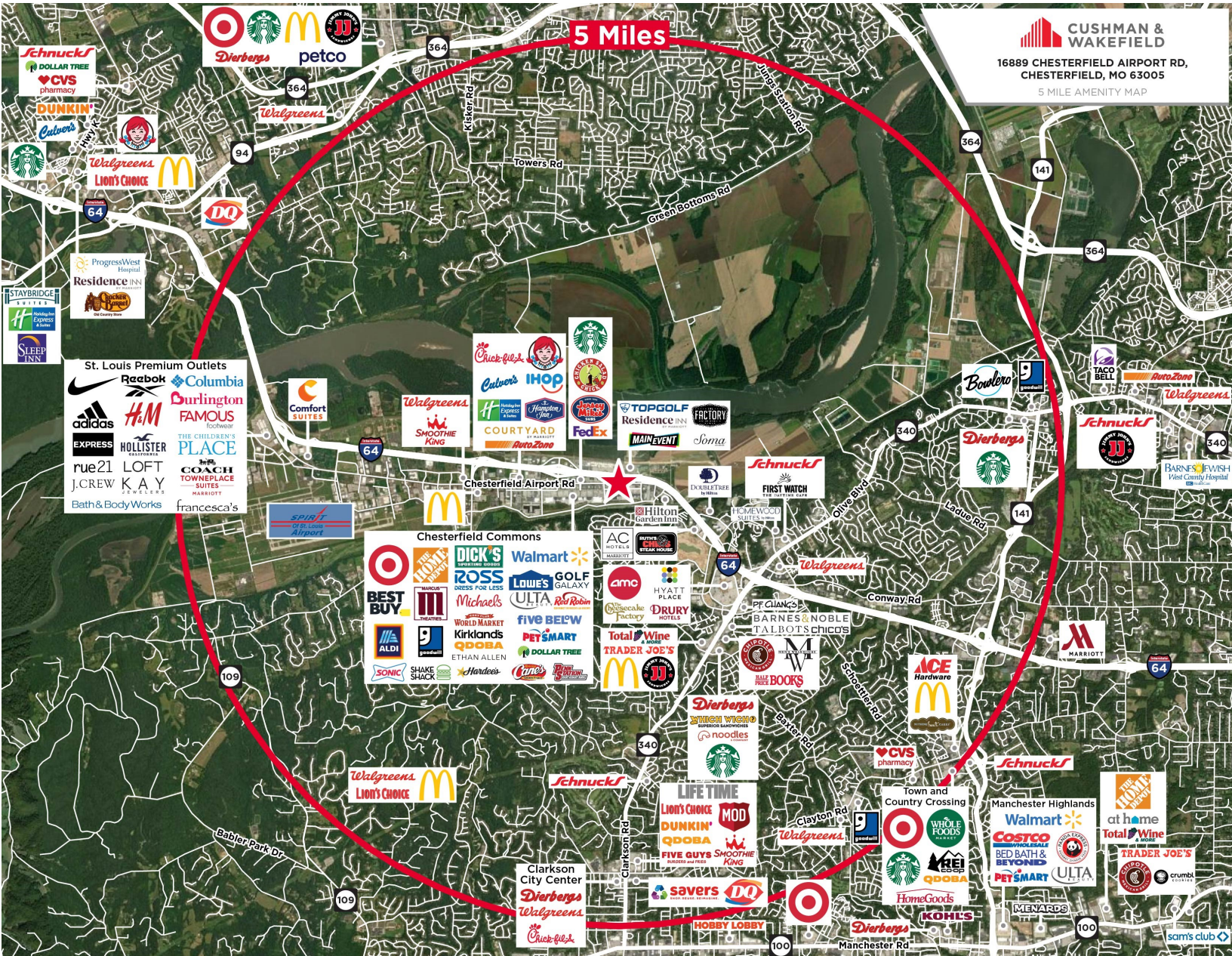
Cushman & Wakefield Copyright 2017. No warranty or representation, express or implied, is made to the accuracy or completeness of the information contained herein, and same is submitted subject to errors, omissions, change of price, rental or other conditions, withdrawal without notice, and to any special listing conditions imposed by the property owner(s). As applicable, we make no representation as to the condition of the property (or properties) in question.



RETAIL SPACE FOR LEASE

16889 Chesterfield Airport Rd
Chesterfield, Missouri 63005

Location Aerial



CUSHMAN & WAKEFIELD
16889 CHESTERFIELD AIRPORT RD,
CHESTERFIELD, MO 63005
5 MILE AMENITY MAP

David Wirth
+1 314 925 2916
david.wirth@cushwake.com

Kyle Pershing
+1 314 236 5471
kyle.pershing@cushwake.com

7700 Forsyth Blvd, Suite 1210
St. Louis, Missouri
main +1 314 862 7100
cushmanwakefield.com